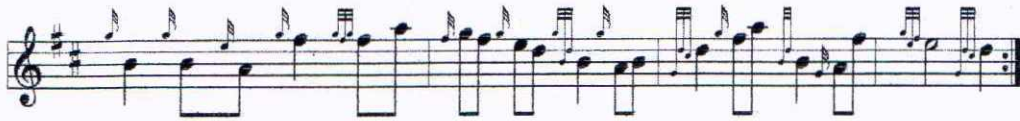


LOCH LOMOND

(arr. R Murphy)



STOP YOUR TICKLING JOCK

(arr. R Murphy)



BONNIE LASS O'FYVIE

(arr. R Murphy)



I LOVE A LASSIE

(arr. R Murphy)

Musical notation for the first piece, 'I Love a Lassie'. It consists of two staves of music in G major and 2/4 time. The first staff begins with a repeat sign and contains the main melody. The second staff continues the melody with some phrasing changes and ends with a double bar line.

ROSES OF PRINCE CHARLIE

Musical notation for the second piece, 'Roses of Prince Charlie'. It consists of four staves of music in G major and 2/4 time. The first staff begins with a repeat sign and contains the main melody. The second and third staves continue the melody with various phrasing and articulation. The fourth staff concludes the piece with a final cadence and a double bar line.

KINROSS & DISTRICT PIPE BAND